

MONTHLY MEMBERSHIP PROGRESS REPORT

District 2 X3

Results as of: 9/30/2023

GMT:

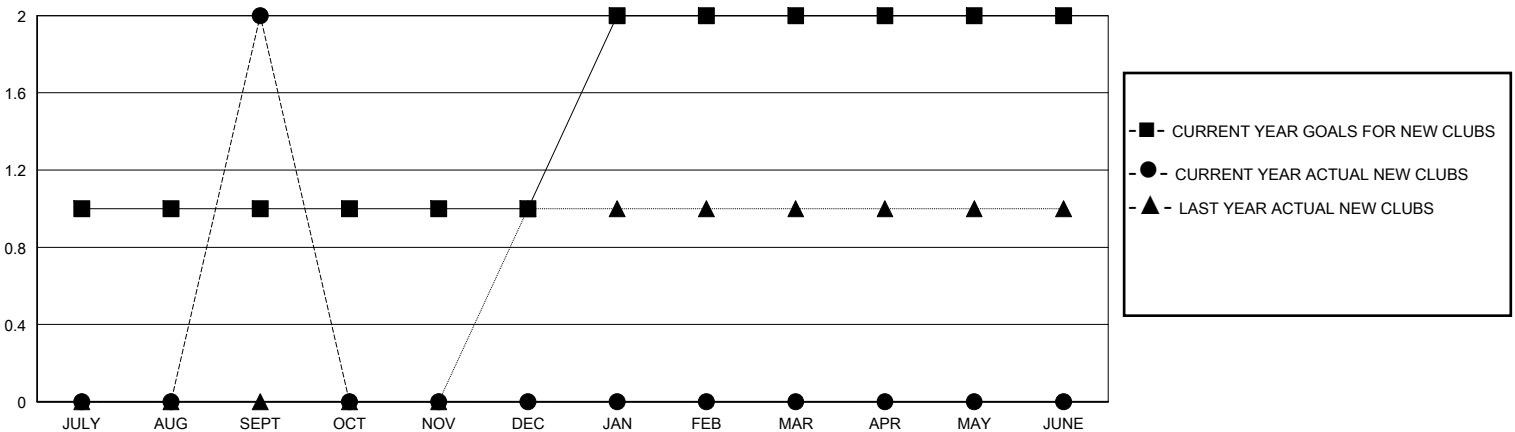
LOCATION TEXAS

GMT CA

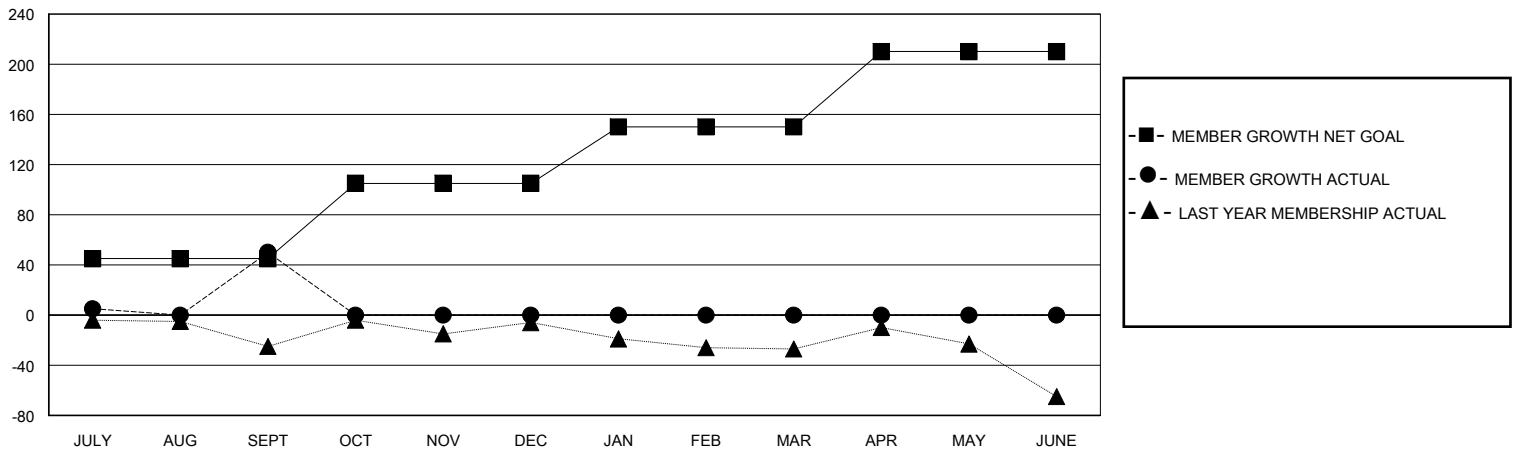
Clubs			
RESULTS FOR 2023-2024			
QUARTER	NEW CLUB GOAL	NEW CLUBS	DROPPED CLUBS
JULY/AUG/SEPT	1	2	1
OCT/NOV/DEC	0	0	0
JAN/FEB/MAR	1	0	0
APR/MAY/JUNE	0	0	0

Members			
RESULTS FOR 2023-2024			
QUARTER	MEMBER GROWTH NET GOAL	MEMBER GROWTH ACTUAL	DROPPED MEMBERS ACTUAL (including transfers)
JULY/AUG/SEPT	45	99	44
OCT/NOV/DEC	60	0	0
JAN/FEB/MAR	45	0	0
APR/MAY/JUNE	60	0	0

GOALS AND ACTUAL NEW CLUBS CUMULATIVE



GOALS AND ACTUAL MEMBERS CUMULATIVE



DROPPED CLUBS: 1

25 CLUBS OF 51 ADDED 1 OR MORE NEW MEMBERS

GENDER DISTRIBUTION

MALE 842 (62.09%)
FEMALE 514 (37.91%)

DROPPED MEMBERS

DECEASED	1
CLUB CANCELLED	0
OTHER	43
TOTAL	44

[CLICK HERE FOR CUMULATIVE MEMBERSHIP DATA](#)

TOTAL FAMILY UNIT MEMBERS	157
FAMILY MEMBERS PAYING HALF DUES	79